



Yacht Name:

PANAKEIA
**PRICE FROM
€ 160 000 PER WEEK**

YEAR BUILT / REFIT
2008 / 2018

LENGTH
46m./(149'3")

BUILDER
Astondoa

GUESTS
10

CABINS
5

CREW
10

YACHT TYPE
Motor

SPECIFICATION
DIMENSIONS

LENGTH
45,5m.
BEAM
8,6m.
DRAFT
2,3m.

CONFIGURATION

DOUBLE
4
TWIN
1

SPEED

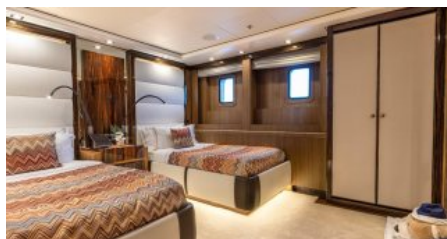
CRUISING SPEED
12,0 knots
MAXIMUM SPEED
16,0 knots

AMENITIES

Air Conditioning, Jacuzzi, Elevator, Stabilisers at anchor, Stabilisers underway, WiFi

TENDERS & TOYS

TENDERS: Yuka Shark Chase tender 2022 11.6 m. Composite with Carbon Fiber Reinforcement 2 X 400 HP Mercury Racing outboard Engines with Bravo One Propellers Max Speed 60 Knot Featuring a cabin with en-suite. Two special designed suspension seats are used for rough seas both for driver and the guest. There is a wet bar and refrigerator at the aft cabinet. 1 x 5.2m inflatable tender Grand Marine Silver line (9 pax) - Mercury 80 HP WATERSPORTS: one seadoo RXP 260 rs One seadoo GTX 260 Ltd 1xSea Bob Variety of masks & Snorkelling equipment: 2 wakeboards 2 inflatable paddleboards Aquaglide floating island, slide, trampoline donuts



[More photos](#)

ENQUIRE NOW

+44 20 45 773 007

+1 646 905 0707

+33 749 41 21 53

+33 749 41 21 53

info@yachthunter.com
yachthunter.com



Scan the QR code for more information