



Yacht Name:

NAIA

**PRICE FROM
\$ 595 000 PER WEEK**

YEAR BUILT / REFIT
2011 / 2014

CABINS
8

LENGTH
74m./(241'6")

CREW
23

BUILDER
Freire

GUESTS
12

YACHT TYPE
Motor

SPECIFICATION

DIMENSIONS

LENGTH
73,6m.
BEAM
13,2m.
DRAFT
4,5m.

CONFIGURATION

MASTER
1
DOUBLE
3
PULLMAN
1
CONVERTIBLE
4

SPEED

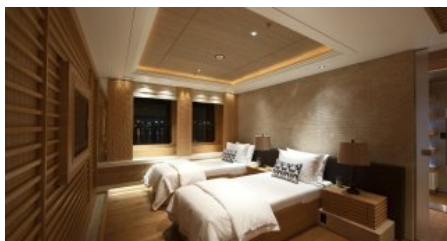
CRUISING SPEED
12,0 knots
MAXIMUM SPEED
12,5 knots

AMENITIES

Air Conditioning, Gym, Jacuzzi, Helipad, Wheelchair Access, Stabilisers at anchor, WiFi, Stabilisers underway, Approved RYA water sports centre

TENDERS & TOYS

TENDERS 9.6m Vikal Limousine tender with 2 x 255hp engines (12 passengers) 9.5m McMullen & Wing tender with 2 x 200hp diesel engines (14 passengers) 5.9m Zodiac Milpro MK5 HD RIB tender with 60hp engine (15 passengers, 12 comfortably) 6.5m Wahoo rescue tender with 180hp engine (6 passengers) TOYS 1 x Yamaha VX Cruiser waverunner (3 man) 1 x Yamaha VX cruiser HO 2021 2 x SeaBobs 4 x kayaks (2 x 1 man and 2 x 2 man) 2 x stand up paddle boards 2 x Schiller water bikes (1 man) Waterskis, wakeboards & kneeboard Diving equipment (rendezvous diving only) Fishing gear (coastal & offshore) 9m swim platform pool Waterslide Approved RYA training centre for personal watercraft Inflatable tows: 1 x banana boat 2 x couches Wetsuits for adults in various sizes Compressor: 2 x Nautilus NUS75 Marinized compressors O2 generator: 1 x NUS Oxygen generation and storage system Helicopter operations: NAIA's helideck is fully operational and certified as a commercial deck. The yacht has a fully trained crew, however there are no refuelling capabilities on board. Limiting factors of heli-ops are: D-value (diameter of the landing circle on deck): 12m T-value (take-off weight when fully loaded): 3.1t



[More photos](#)

ENQUIRE NOW

+44 20 45 773 007

+1 646 905 0707

+33 749 41 21 53

+971 58 916 7360

info@yachthunter.com
yachthunter.com



Scan the QR code for more information