



Yacht Name:

LEVANTE

PRICE FROM

€ 62 000 PER WEEK

YEAR BUILT / REFIT
2013 / 2020

CABINS
4

LENGTH
24m./(78'5")

CREW
4

BUILDER
Sunreef Yachts

CHARTER DESTINATIONS
Indian Ocean & South East Asia

GUESTS
8

YACHT TYPE
Sail

SPECIFICATION

DIMENSIONS

LENGTH
23,9m.
BEAM
11,6m.
DRAFT
1,8m.

CONFIGURATION

DOUBLE
3
TWIN
1
PULLMAN
1

SPEED

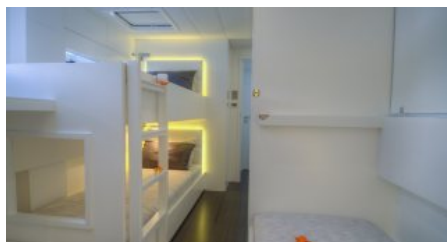
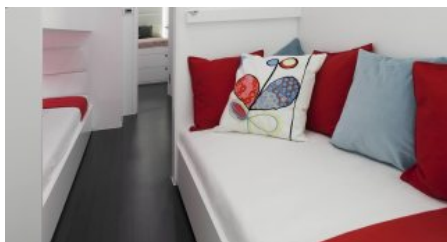
CRUISING SPEED
10,0 knots
MAXIMUM SPEED
14,0 knots

AMENITIES

Air Conditioning, WiFi, Gym

TENDERS & TOYS

2 Tenders: 115HP * and 10HP *1 brand new zodiac pro 5'5 full electronic equipment's on board with an 115HP Mercury engine 1 AB inflatable Lammina AL with an 15CV Yamaha engine Waterski for kids and adults Mono Ski Wake Skate Kite boards and Slingshot sails for 3 people --> All our kite gear belongs to the owners and this equipment is quite fragile and must be in top shape when the owners wish to use it. At the moment we do not provide kite gear but please request and we can look at possibilities 2 x Windsurfboard JP and Neil Pryde sails (Jp Australia (80) L 256cm / 8'1 54cm / 21'3 • Jp Australia (90) L 234cm / 7'8 60,5cm / 23'8 1 Short surf board • Santa cruz 6'2) Diving equipment for 6 people with compressor on board + stabs + regulator + tank (ONLY WITH LICENSE) 2x Inflatable Kayaks ITWIT - Sevylor Pointer K1 2 x inflatable paddle boards (SUP) STX race 12,6, ITWIT 10,7 Inflatables: Aquaglide Rebound 12 and Aquaglide Blast Fishing equipment: - Big • Shimano triton beast master 80/130 two speed 2m10 - Medium • Shimano tiagra 50W lrs 5'6 - Small • Yuki master boat 500 pse/160 • Shimano tyrnos 5'6 30-80lb mono 50-100lb braid • Bait • hook • pops and jigs squids etc • lines 2 yoga mats 2 power bands



[More photos](#)

ENQUIRE NOW

+44 20 45 773 007

+1 646 905 0707

+33 749 41 21 53

+971 58 916 7360

info@yachthunter.com
yachthunter.com



Scan the QR code for more information